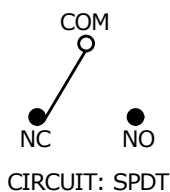


P.C. MOUNTING

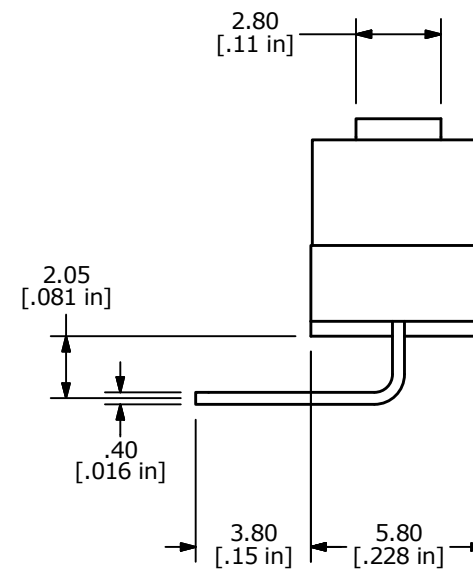
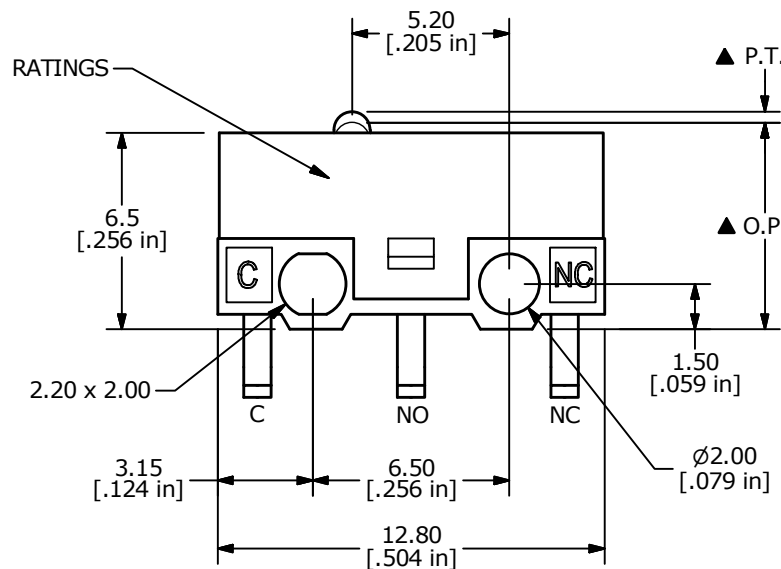
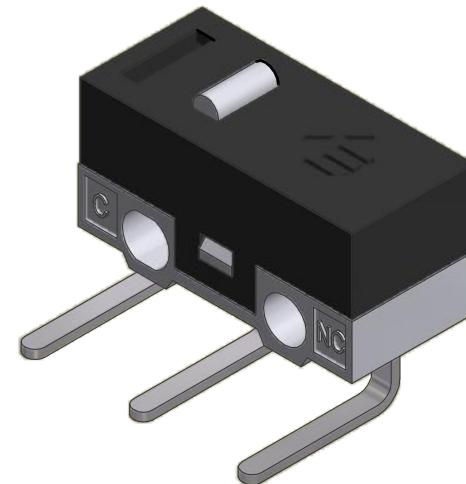
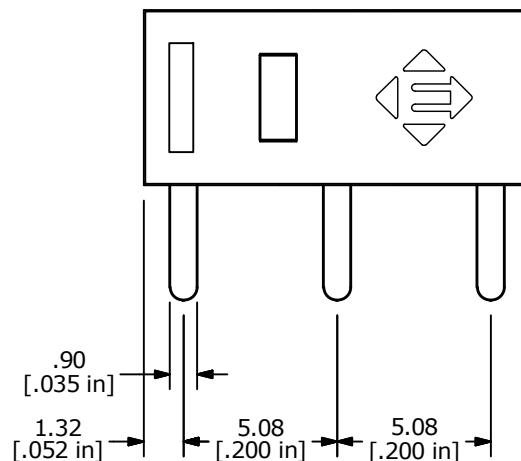


| O.P. (mm) | P.T. (mm) |
|-----------|-----------|
| 7.0 ±0.2 | .70 MAX. |

O.P. = OPERATING POINT
P.T. = PRE-TRAVEL

NOTES:

1. ALL DIMENSIONS IN MM [INCH]
2. GENERAL TOLERANCE: X.X ± 0.4
X.XX ± 0.25
- ▲ 3. RATING: 0.1A @ 5VDC
- ▲ 4. OPERATING FORCE: 130 ± 40gf
5. OPERATING TEMP: -25°C to 75°C
6. ELECTRICAL LIFE: 10,000 CYCLES MIN.
7. MECHANICAL LIFE: 1,000,000 CYCLES MIN.
8. INSULATION RESISTANCE: 100 MEGA-OHMS MIN.
9. DIELECTRIC STRENGTH: 500VAC - 1 MINUTE
10. ▲ DENOTES CRITICAL PARAMETER.
11. PACKAGED IN TRAYS, 120 PIECES PER TRAY.



| | | | | |
|-----|--------|------------------------|--------|----|
| A | 23949 | RELEASE FOR PRODUCTION | 7/5/19 | MW |
| REV | PCR NO | DESCRIPTION | DATE | BY |

| | | | | |
|------------------------|----------|----|---------|-----|
| E-SWITCH® | | | | |
| TITLE SS075Q100F130V1A | | | | |
| SCALE | DATE | DR | DWG | REV |
| 4:1 | 7/3/2019 | MW | Q971044 | A |

THE INFORMATION CONTAINED IN THIS DOCUMENT IS PROPRIETARY TO E-SWITCH AND IS NOT TO BE COPIED OR TRANSFERRED